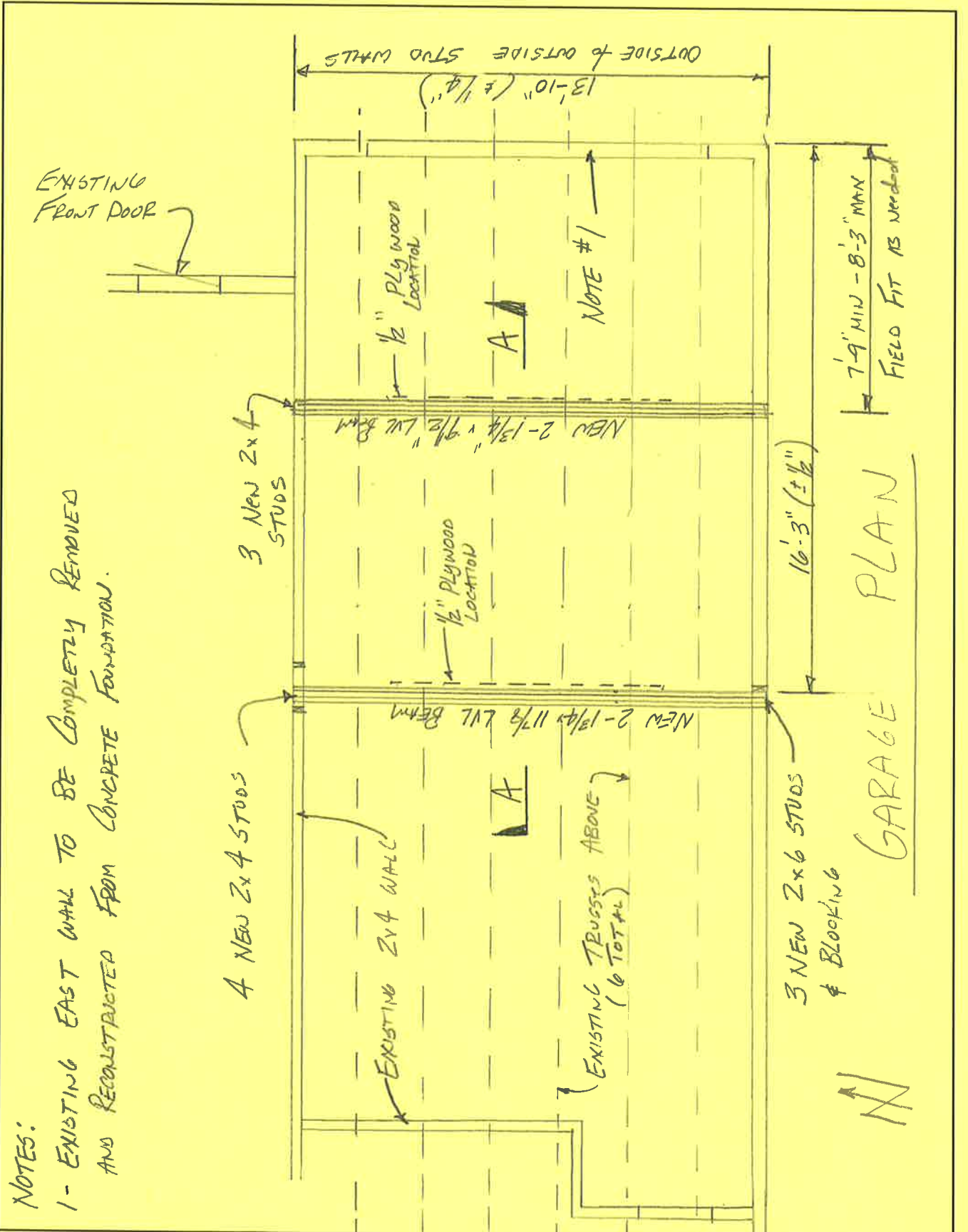




**WIDSETH
SMITH
NOLTING**

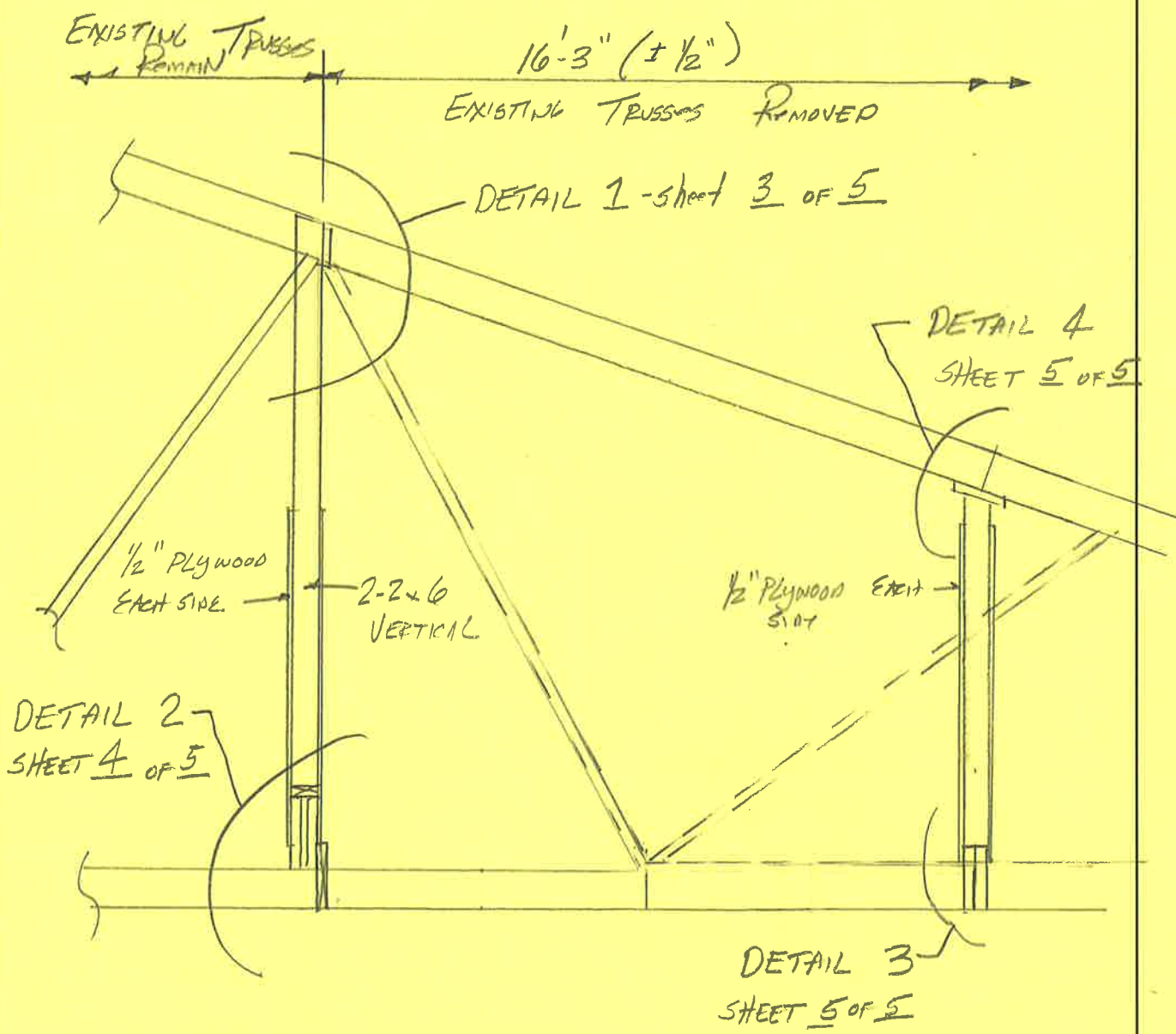
JOB 40135 BEACH ROAD
GARAGE ROOF/TRUSSES JOB NO. 2021-11967
 CALCULATED BY MVA DATE 11/24/21
 CHECKED BY _____ DATE _____



NOTES:
 1- EXISTING EAST WALL TO BE COMPLETELY REMOVED AND RECONSTRUCTED FROM CONCRETE FOUNDATION.



JOB 40135 Beach Road
GARAGE ROOF TRUSSES JOB NO. 2021-11967
CALCULATED BY MVH DATE 11/24/21
CHECKED BY _____ DATE _____



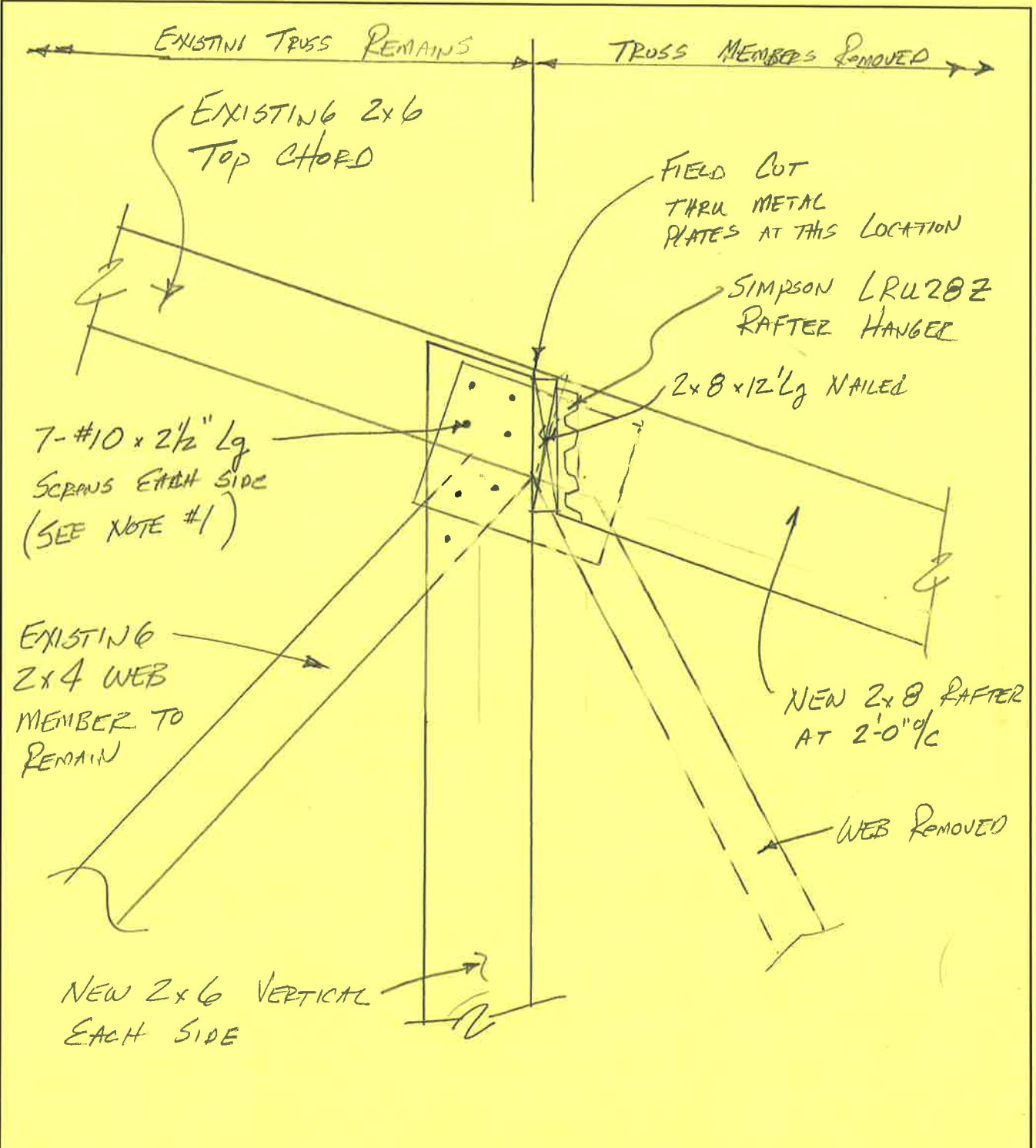
SECTION A-A
1/2" = 1'-0" (LOOKING NORTH)

NOTE: SECTION A-A TYPICAL FOR EXISTING SIX (6) TRUSSES.



**WIDSETH
SMITH
NOLTING**

JOB 40135 Benth Road
Garage Roof / Trusses JOB NO. 2021-11967
 CALCULATED BY MVH DATE 11/24/21
 CHECKED BY _____ DATE _____



DETAIL 1

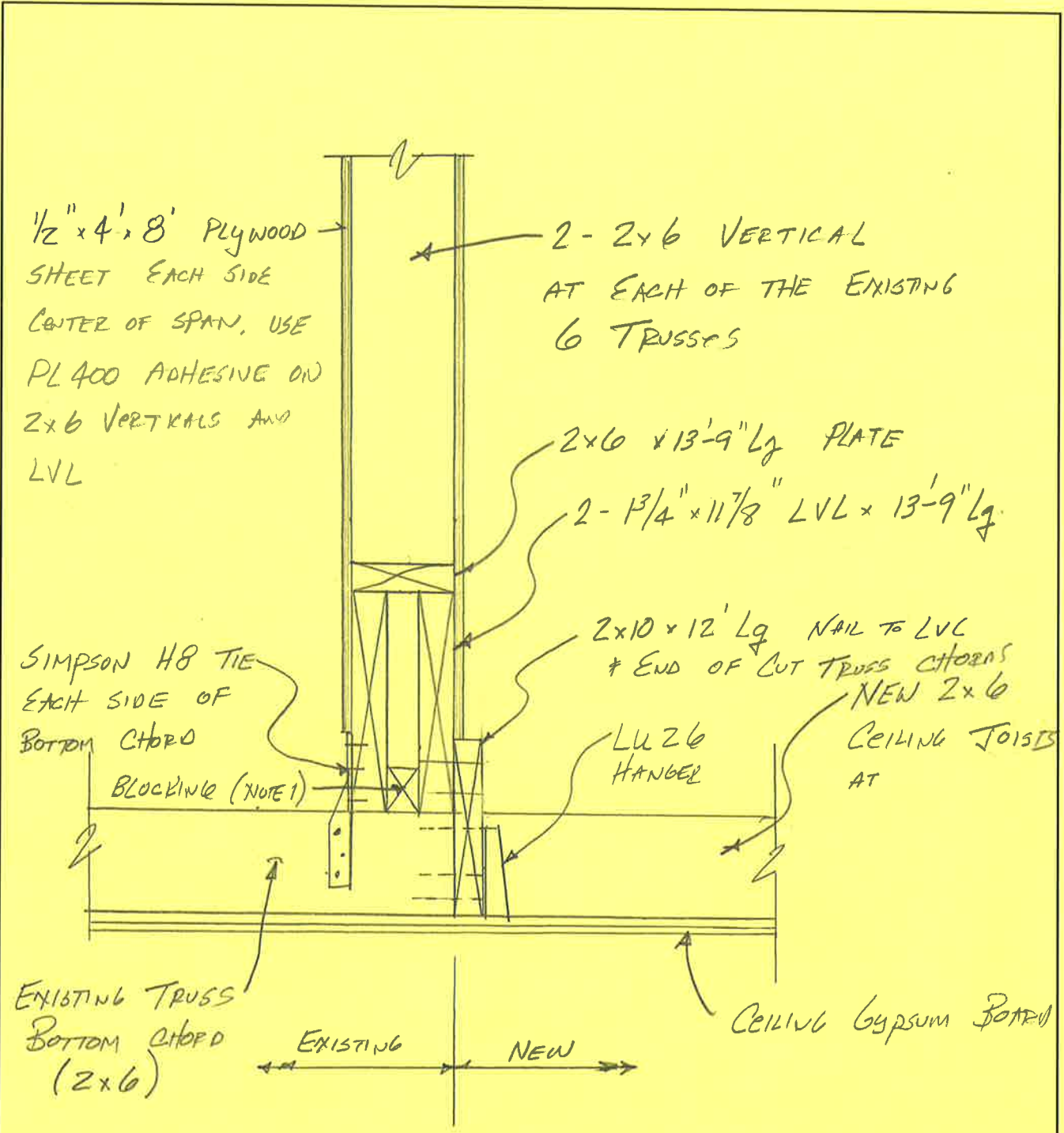
NOTES: 1 - COAT NEW 2x6 VERTICAL WITH PL 400 on ALL AREAS CONTACTING TRUSS MEMBERS. WIRE BRUSH CLEAN PLATE + TRUSS SURFACES FIRST. SHEET 3 OF 5

ADHESIVE



**WIDSETH
SMITH
NOLTING**

JOB 40135 BEACH ROAD
GARAGE POOR/TRUSSES JOB NO. 2021-11967
 CALCULATED BY MVA DATE 11/24/21
 CHECKED BY _____ DATE _____



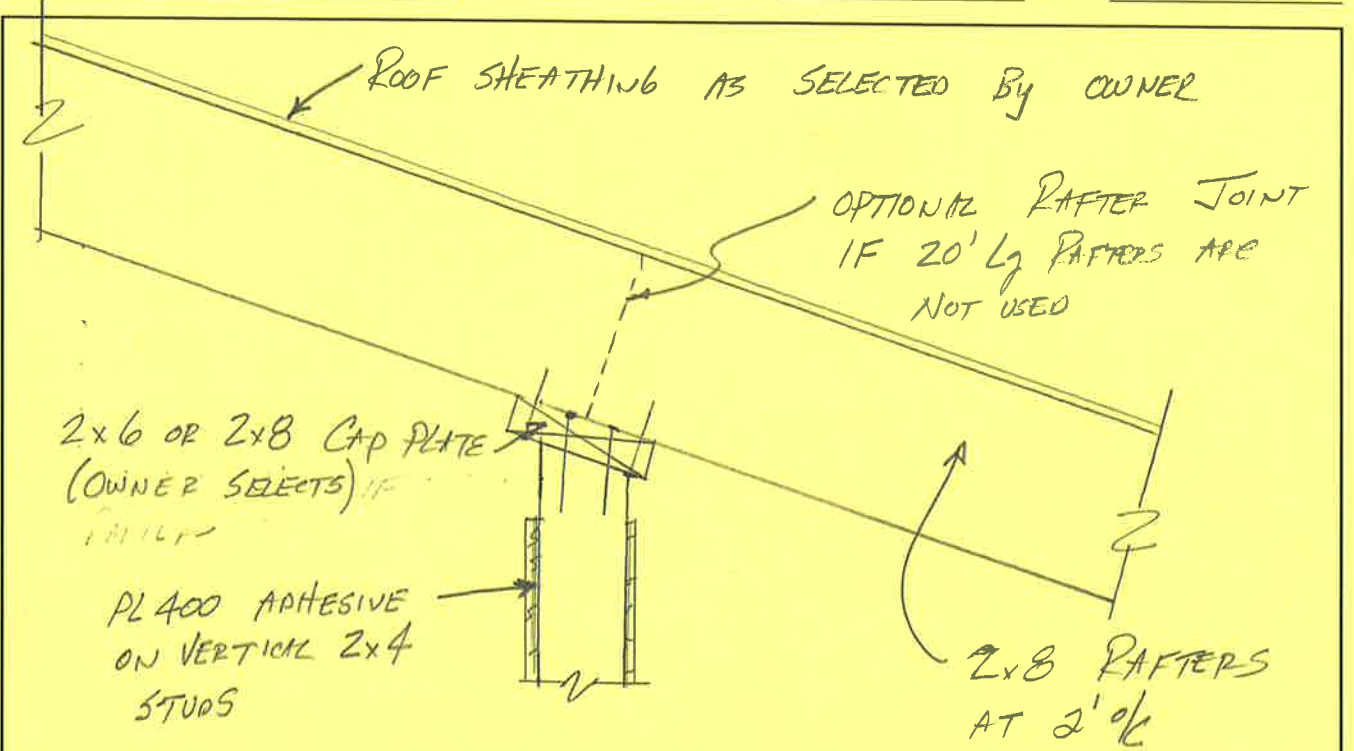
DETAIL 2

NOTES: 1 - CONTRACTOR MAY USE A 2x6 BOTTOM PLATE INSTEAD OF BLOCKING AT EACH TRUSS. CONTRACTOR'S CHOICE.

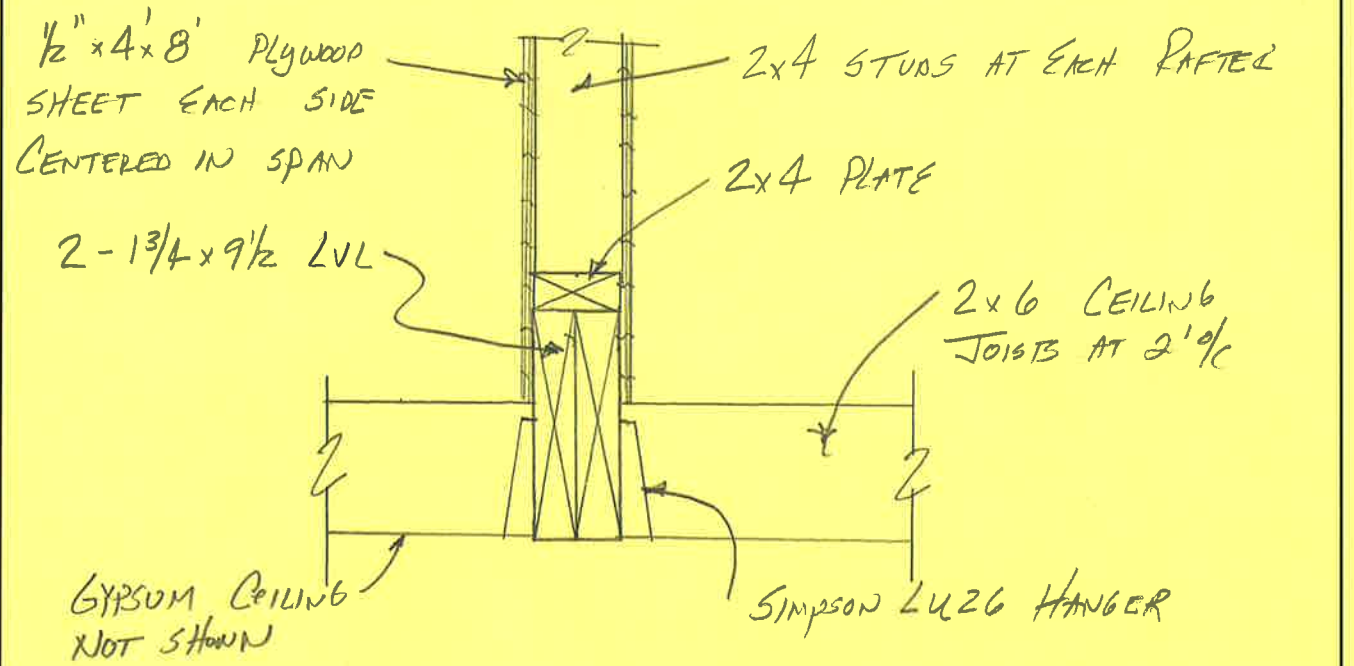


**WIDSETH
SMITH
NOLTING**

JOB 40135 BEACH ROAD
GARAGE ROOF TRUSSES JOB NO. 2021-11967
 CALCULATED BY MVH DATE 11/24/21
 CHECKED BY _____ DATE _____



DETAIL 4



DETAIL 3

DESIGN PROPERTIES

Beam #2
Beam #1

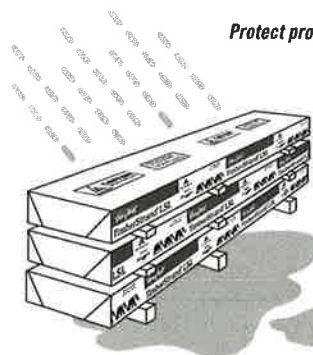
Allowable Design Properties⁽¹⁾ (100% Load Duration)

Grade	Width	Design Property	Depth																				
			4 3/8"	5 1/2"	5 1/2" Plank Orientation	7 1/4"	9 1/4"	9 1/2"	11 1/4"	11 1/2"	14"	16"	18"	20"									
TimberStrand® LSL																							
1.3E	3 1/2"	Moment (ft-lbs)	1,735	2,685	1,780	4,550																	
		Shear (lbs)	4,340	5,455	1,925	7,190																	
		Moment of Inertia (in. ⁴)	24	49	20	111																	
		Weight (plf)	4.5	5.6	5.6	7.4																	
1.55E	1 3/4"	Moment (ft-lbs)							5,210		7,975	10,920	14,090										
		Shear (lbs)							3,435		4,295	5,065	5,785										
		Moment of Inertia (in. ⁴)							125		244	400	597										
		Weight (plf)							5.2		6.5	7.7	8.8										
	3 1/2"	Moment (ft-lbs)							10,420		15,955	21,840	28,180										
		Shear (lbs)							6,870		8,590	10,125	11,575										
		Moment of Inertia (in. ⁴)							250		488	800	1,195										
		Weight (plf)							10.4		13	15.3	17.5										
Microllam® LVL																							
2.0E	1 3/4"	Moment (ft-lbs)		2,125		3,555	5,600	5,885	8,070	8,925	12,130	15,555	19,375	23,580									
		Shear (lbs)		1,830		2,410	3,075	3,160	3,740	3,950	4,655	5,320	5,985	6,650									
		Moment of Inertia (in. ⁴)		24		56	115	125	208	244	400	597	851	1,167									
		Weight (plf)		2.8		3.7	4.7	4.8	5.7	6.1	7.1	8.2	9.2	10.2									
Parallam® PSL																							
2.0E	3 1/2"	Moment (ft-lbs)							12,415	13,055	17,970	19,900	27,160	34,955	43,665								
		Shear (lbs)							6,260	6,430	7,615	8,035	9,475	10,825	12,180								
		Moment of Inertia (in. ⁴)							231	250	415	488	800	1,195	1,701								
		Weight (plf)							10.1	10.4	12.3	13.0	15.3	17.5	19.7								
	5 1/4"	Moment (ft-lbs)							18,625	19,585	26,955	29,855	40,740	52,430	65,495								
		Shear (lbs)							9,390	9,645	11,420	12,055	14,210	16,240	18,270								
		Moment of Inertia (in. ⁴)							346	375	623	733	1,201	1,792	2,552								
		Weight (plf)							15.2	15.6	18.5	19.5	23.0	26.3	29.5								
	7"	Moment (ft-lbs)							24,830	26,115	35,940	39,805	54,325	69,905	87,325								
		Shear (lbs)							12,520	12,855	15,225	16,070	18,945	21,655	24,360								
		Moment of Inertia (in. ⁴)							462	500	831	977	1,601	2,389	3,402								
		Weight (plf)							20.2	20.8	24.6	26.0	30.6	35.0	39.4								

(1) For product in beam orientation, unless otherwise noted.

Some sizes may not be available in your region.

PRODUCT STORAGE



Protect product from sun and water

CAUTION:
Wrap is slippery when wet or icy

Align stickers (2x3 or larger)
directly over support blocks

Use support blocks (6x6 or larger)
at 10' on-center to keep bundles
out of mud and water